



# Trinity River mainstem redd survey update

## 11/06/2012

The [Arcata Fish and Wildlife Office](#) along with the [California Department of Fish and Game](#), [Yurok Tribal Fisheries Program](#), [Hoopa Valley Tribal Fisheries Department](#), and [Shasta-Trinity National Forest](#) survey the mainstem Trinity River to recover salmonid carcasses and count and map Chinook salmon (*Oncorhynchus tshawytscha*) redds. The distribution of Chinook salmon redds is expected to change in response to rehabilitation efforts of the [Trinity River Restoration Program](#), and the relative run size of natural vs. [Trinity River Hatchery](#) origin fish. Redd and carcass surveys are conducted weekly on the River between [Lewiston Dam](#) and the North Fork Trinity River (Reaches 1 through 7), and are conducted every other week on the Reaches downstream of the North Fork Trinity River ([link to map](#)).

This update provides preliminary data on 2012 redd observations encountered and entered into our database as of 11/02/2012 (Table 1). Figure 1 compares preliminary 2012 cumulative redd counts for Reaches 1-10 with the previous 10 years (2002-2011). Redds constructed by Chinook and coho salmon are not differentiated. Numbers are later adjusted for Chinook salmon of hatchery and natural origin using data provided by California Department of Fish and Game.

**Table 1. Preliminary count of redds by logistic reach for the fall 2012 mainstem Trinity River redd survey. "NS" = not surveyed. Reach 11 not surveyed due to extreme whitewater (Burnt Ranch Gorge). These data are preliminary and subject to revision.**

Week start	Reach														Total
	01	02	03	04	05	06	07	08	09	10	11	12	13	14	
9/3	0														0
9/10	0	3	13	7	1	0	0	NS	0	0					24
9/17	5	10	49	45	26	0	0								135
9/24	27	46	86	42	105	15	9	NS	6	4					340
10/1	199	90	85	89	106	84	86								739
10/8	243	NS	63	74	NS	141	133	NS	248	141					1,043
10/15	132	71	83	66	139	150	154					11	0	1	807
10/22	156	108	58	60	69	157	146	NS	343	162					1,259
10/29	173	60	16	28	17	225	114					219	NS	NS	852
11/5															0
11/12															0
11/19															0
11/26															0
12/3															0
12/10															0
Total	935	388	453	411	463	772	642	0	597	307		230	0	1	5,199



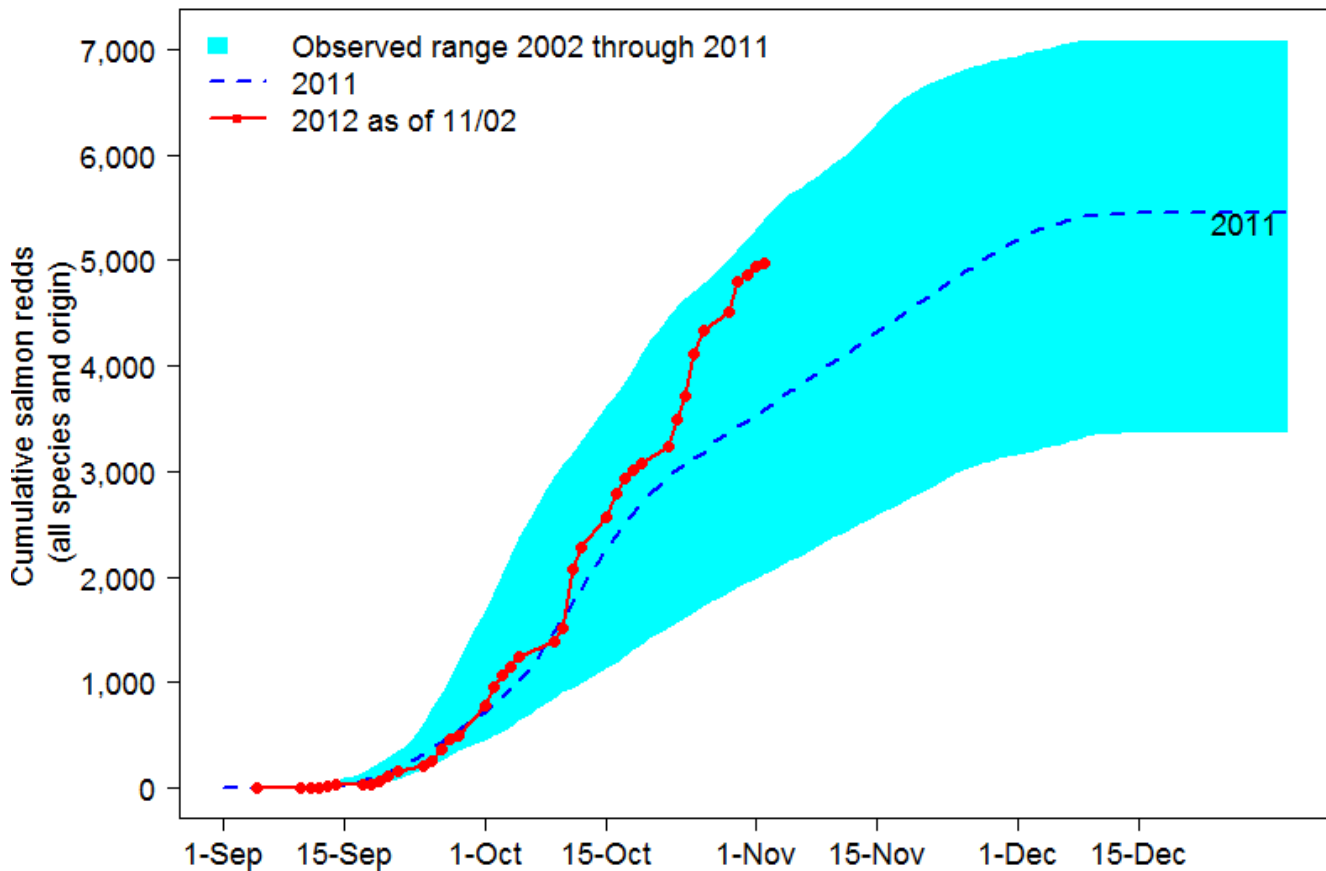


Figure 1. Comparison of fall 2012 cumulative Trinity River mainstem redd counts (Chinook and coho salmon) from Lewiston Dam to Cedar Flat as of 11/02/2012 to counts in 2011 and the range of years 2002-2011.

A Keyhole Markup Language file has been created to view redd distribution data with Google Earth.

[Redds\\_2012\\_through\\_11\\_02.kml](#)

(last modified November 6, 2012)

If Google Earth fails to launch automatically, the file can be used by first saving it to your computer then launching the Google Earth application. Select the menu option **File, Open**, locate the downloaded file (Redds\_2012\_through\_11\_02.kml); and click the **Open** button.

Note: Background imagery in Google Earth is sometimes not projected with perfect accuracy. Redd locations may appear to be mapped on dry ground in those cases when viewed with Google Earth, but they are indeed in the water! Likewise, the river has changed since the most recently available Google Earth imagery.

For more information regarding mainstem Trinity River redd surveys, please contact Charlie Chamberlain at (707) 822-7201 or [charles\\_chamberlain@fws.gov](mailto:charles_chamberlain@fws.gov)