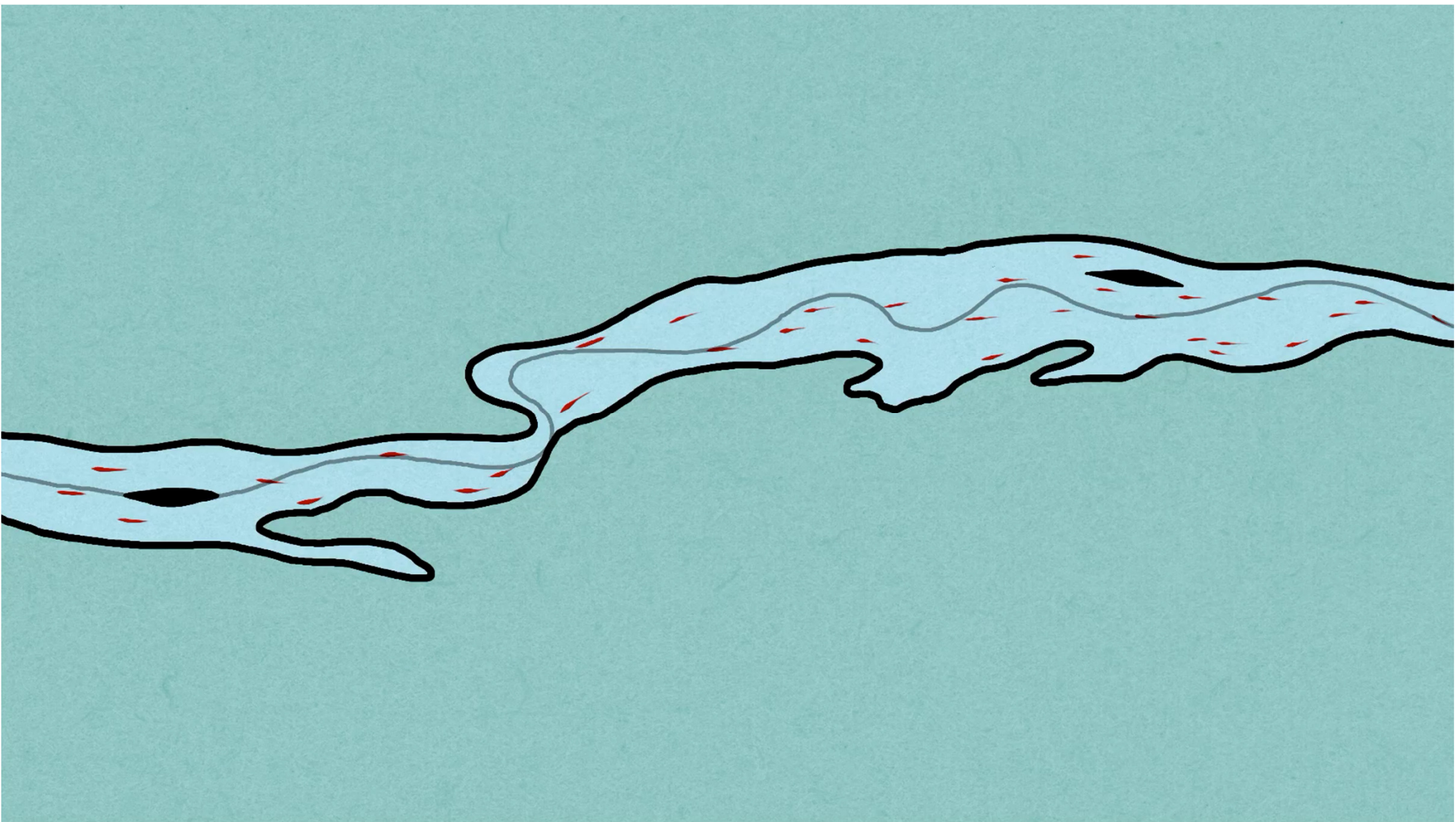


Petitioning to List
Northern California Summer
Steelhead
under the California
and federal
Endangered Species Acts

Scott Greacen
Conservation Director
Friends of the Eel
River







Endangered Species Act of 1973

Purpose: "... to provide a means whereby **the ecosystems upon which endangered species and threatened species depend** may be conserved ..."

"The Secretary shall make (listing) determinations ... **solely on the basis of the best scientific and commercial data available** ..."

DPS (Distinct Population Segment) factors

- **Discreteness**

“... markedly separated from other populations of the same taxon as a consequence of physical, physiological, ecological, or behavioral factors. Quantitative measures of genetic or morphological discontinuity may provide evidence of this separation.”

- **Significance**

- Persistence of the discrete population segment in an **ecological setting unusual** or unique for the taxon
- Evidence that loss of the discrete population segment would result in a **significant gap** in the range of a taxon
- Evidence that the discrete population segment differs markedly from other populations of the species in its **genetic characteristics**

- **Conservation Status** (Per Moyle et. al. 2017)

- NC Summer Steelhead = 1.9, Critical
- NC Winter Steelhead = 3.3, Moderate

Thanks to all the
fish

