



# Central Valley Salmon Habitat Partnership

Working together for salmon and steelhead habitat restoration



## A Diverse New Collaboration Focused on Restoring Salmon & Steelhead Habitat



The Central Valley Salmon Habitat Partnership works to improve salmon and steelhead populations, habitats and ecosystem conditions by leveraging cooperation and science to better align priorities, funding and resources.

The Partnership prioritizes:

- Science-based objectives and regional habitat objectives
- Coordinated action across state, federal and local governments and private landowners, conservation groups and other involved parties
- Recovery and maintenance of viable, self-sustaining spring-run and winter-run Chinook salmon and Central Valley steelhead populations
- Restoration and maintenance of robust and commercially and recreationally viable fall-run and late-fall Chinook salmon



### Working Together

The Central Valley Salmon Habitat Partnership brings together a diverse group of stakeholders to support salmon and steelhead recovery in the Central Valley.

### Our Strengths

By working across disciplines, the Partnership includes expertise on a broad range of issues, from scientific study to securing permits for habitat restoration. This cross-disciplinary approach allows us to move from concept to implementation efficiently.



### Contact

Jacob Katz, California Trout, [jkatz@caltrout.org](mailto:jkatz@caltrout.org) | [salmonpartnership.org](http://salmonpartnership.org)  
Rene Henery, Trout Unlimited, [rhenery@tu.org](mailto:rhenery@tu.org)





# Central Valley Salmon Habitat Partnership

Working together for salmon and steelhead habitat restoration



## Central Valley Salmon Habitat Implementation Plan

The Partnership will develop an Implementation Plan that relies on the best available science to identify priority restoration projects to support a variety of habitat types.

The Plan will ensure that funding is used efficiently by coordinating efforts among government agencies, conservation groups, water suppliers, and private landowners to ensure the right projects are prioritized to maximize benefits to salmon and steelhead in the Central Valley.

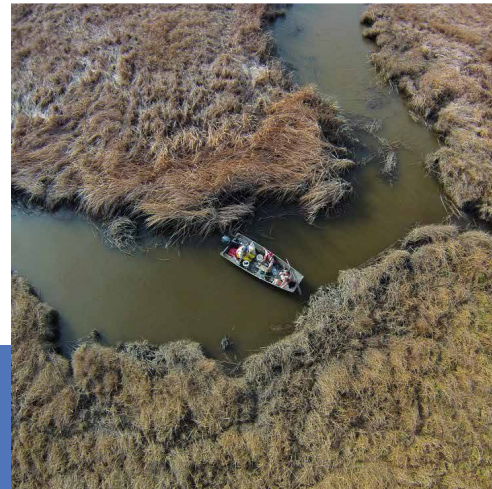
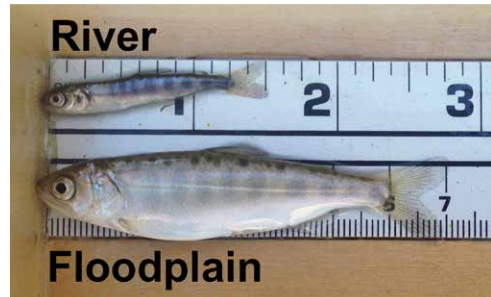
### Quality Habitat for Salmon

Butte Creek and Clear Creek have growing populations of native fishes and salmon. Decades-long efforts have led to the restoration and maintenance of every habitat type needed to complete all freshwater life stages of salmon and steelhead in these creeks.

These include:

- Holding habitat – areas with sufficient shade and cold, clean water for salmon and steelhead waiting to reproduce.
- Spawning habitat – access to natal spawning grounds (via fish ladders or barrier removal) with clean gravel beds and adequate stream flow.
- Rearing habitat – stream and floodplain-like habitat, with lots of bugs for juveniles to feed on and refuge areas to avoid predators.

The Partnership will focus on ensuring that all Central Valley streams have enough of the right kinds of habitat in the right places to support sustainable and growing populations of salmonids and other native fishes. The Central Valley Salmon Habitat Partnership will use Butte Creek, Clear Creek, and others, as examples for future salmon habitat restoration efforts.



### Contact

Jacob Katz, California Trout, [j Katz@caltrout.org](mailto:j Katz@caltrout.org) | [salmonpartnership.org](http://salmonpartnership.org)  
Rene Henery, Trout Unlimited, [rehenery@tu.org](mailto:rehenery@tu.org)